

Delivers a powerful, feature-rich web browsing protection and policy-enforcement solution

Overview

NetIQ® WebMarshal™ is an effective, easy-to-use web browsing protection and policy-enforcement solution designed to manage responsible web use while providing protection from viruses and the downloading of non-business material. The product features URL blacklists, whitelists and Real-time Content Analysis (RCA) to categorize web sites with exceptional performance.

Solutions for Today

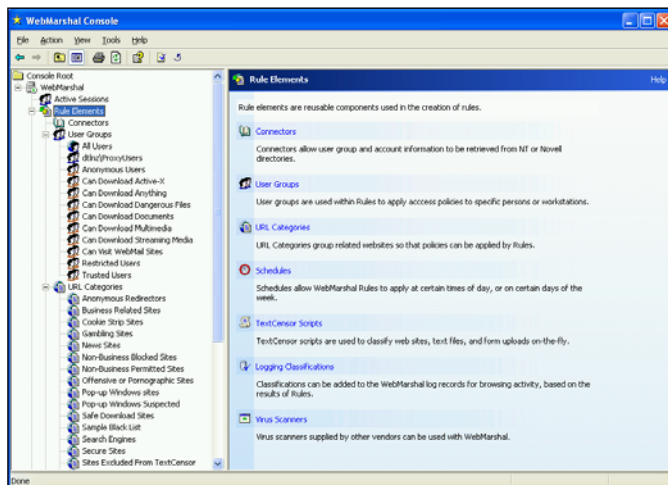
Although the Internet is an essential tool for any business, it can limit productivity and increase risk. Many organizations use written policies to govern acceptable use of the Internet but lack the capacity for policy enforcement. NetIQ WebMarshal offers industry-leading web filtering technology and flexible access control, providing both monitoring and enforcement of these policies.

Acting as a gateway between the Internet and the network, NetIQ WebMarshal allows or denies access to the Internet based on pre-defined company policies or guidelines. Administrators can generate meaningful reports depicting web browsing activities and security concerns while supporting enterprises with tens of thousands of users.

Key Benefits

Supplies seamless management capabilities - Allows you to simply install and configure NetIQ WebMarshal with minimal administrative training. In addition, its comprehensive reporting capabilities enable you to generate reports on web activity and security events by user or group. This provides a detailed window for management into web utilization and policy compliance.

Reduces legal and security risk by controlling web access - Protects against the risk of legal liability by preventing employees from browsing offensive content or downloading copyrighted material, such as music or pirated software. NetIQ WebMarshal also prevents viruses from entering the network by controlling web-based e-mail accounts and files downloaded from the web and protects confidential information by ensuring private data is not intentionally or accidentally uploaded to public web sites.



The Console is used for software set up and administration. Definitions and rules are developed and activated through the WebMarshal Console. User groups, schedules and other rule elements can be accessed.

Provides a rapid return on investment - Improves workplace productivity lost through non-business browsing with flexible time and bandwidth quotas assigned according to user, workstation or group. With NetIQ WebMarshal, you can reduce network downtime and slow-downs typically caused by virus infections or non-business bandwidth consumption and protect company assets and corporate reputation by preventing data loss.

Offers unparalleled performance - Provides industry-leading performance up to two times faster than the competition. In addition, NetIQ WebMarshal's enterprise-class scalability enables you to scale to tens of thousands of users.

Technical Summary

NetIQ WebMarshal can be installed as a stand-alone proxy, with existing proxy servers or as a plug-in to Microsoft® Internet Security and Acceleration (ISA) Server. It also comes loaded with pre-configured policies that may be extensively customized by an administrator.

- Real-time Content Analysis intelligently identifies and catalogs web sites as they are requested by users
- Site rules control browsing requests by URL categories and may be conditioned by the time of day allowing allocation of approved times for personal web browsing
- Allows stripping of cookies and denial of ActiveX controls
- Controls file downloads and uploads by size and type with optional anti-virus scanning
- Soft blocking support displays warning messages before allowing "click-to-confirm" access to remind users of organizational policy
- Management reports can be created from data logged in MSDE (a free runtime version is supplied) or Microsoft SQL Server 7.x/2000
- Utilizes high-speed DLL-based anti-virus scanners from leading vendors and operates multiple Scanners simultaneously (optional)
- Configure multiple NetIQ WebMarshal servers as an array for easier administration or export policy configuration to other NetIQ WebMarshal servers
- Supports failover redundancy in Windows2003/2000 Advanced Server Clusters
- Supports Network Load Balancing environments including Microsoft Network Load Balancing services
- Shared design with NetIQ MailMarshal™ provides "learn one, know them all" simplicity
- Flexible quota management wizards control access by time and/or bandwidth
- Secure connectors import, and automatically update, user groups from Microsoft domains/Active Directory or Novell NDS/e-Directory
- Separate administration console application may be accessed by multiple administrators
- Monitor page requests by user or groups in real time

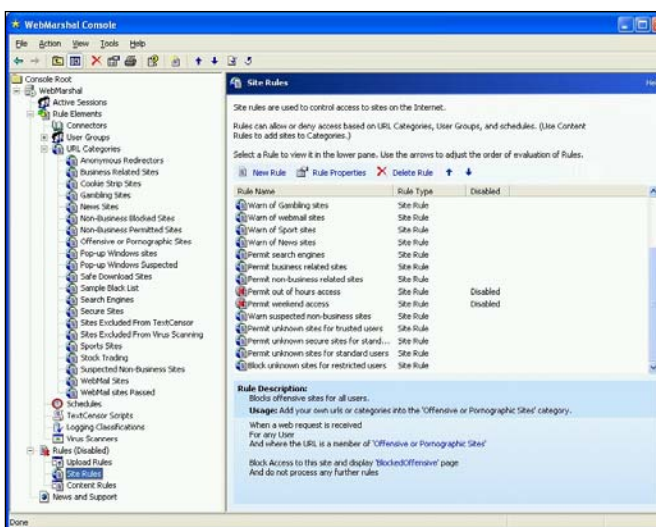
System Requirements

Hardware

- 400 MHz Intel Pentium® II or higher, 512 MB RAM, 5 GB HDD

Software

- Windows 2000 or later
- Microsoft SQL Server 7.0/2000, (MSDE, a free runtime version of SQL Server, is supplied and can be used for smaller sites)



NetIQ WebMarshal offers maximum flexibility in rule implementation. Specific days of the week and times of day can have more relaxed rule enforcement, allowing employees more freedom during off-peak network traffic times. Certain users can be granted unrestricted rights to Internet use.

Contacts

Worldwide Headquarters

NetIQ Corporation

3553 North First Street
San Jose, CA 95134
713.548.1700
713.548.1771 fax
888.323.6768 sales
info@netiq.com
www.netiq.com

NetIQ EMEA

+44 (0) 1784 454500
info@netiq.com

NetIQ Japan

+81 3 5909 5400
info-japan@netiq.com
www.netiq.com/japan

NetIQ Australia & New Zealand

61 (0) 2 9959 2313
www.netiq.com/au

For our offices in Latin America & Asia Pacific,
please visit our web site at www.netiq.com/contacts